

# PilotPump Sanitary High Pressure Pump

Sanitary transfer of pilot sample of fluid with Pressure

## Unique Benefits

- **Energy efficient:** Half energy loss of the most homogenizers
- **Small:** Integrated design deliver the light weight and small dimensions
- **Smart:** Programming control systems confer diligent and foolproof functions
- **Silent:** Noiseless performance with high energy efficiency
- **Strong:** More than 80L/hr
- **CE compliant and RoHs compliant**

Piston Dual Pump/Flow controllable



PilotPump series electric sanitary high pressure pump is an equipment operated with the touch screen and controlled intelligently by program. It can be used for industry pilot preparation of fat emulsion, liposome, nanosuspension, lipid microsphere, nanoemulsions, dairy products, infusion solutions, cell disruption, juice homogeneity, fine chemical engineering, dye and etc. The maximum working pressure is 20,000 Psi/1500 Bar. All parts touching with medium are FDA approved sanitary materials including 316L stainless steel, 17-4PH stainless steel, titanium alloy, tungsten carbide, PTFE, UHMWPE.

## Specifications

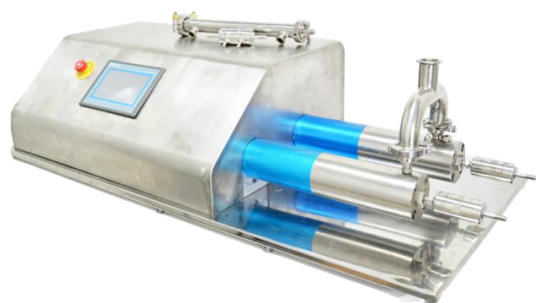
Catalog No.	PilotPump-1500	PilotPump-1000	PilotPump-800	PilotPump-500	PilotPump-300
Flow rate	20L/hr	25L/hr	30L/hr	60L/hr	80L/hr
Min. Sample	100mL	100mL	100mL	200mL	200mL
Max. Pressure	1,500bar	1,000bar	800bar	500bar	300bar
Dimensions (cm)	120×60×40	120×60×40	120×60×40	120×60×40	120×60×40
Weight (kg)	120	120	120	120	120
Max. Temp.	80°C (176°F)				
Power	220V/380V/440V				
Cleaning	CIP/SIP/Flush to clean				
Features	Digital display of pressure or sanitary pressure gauge				



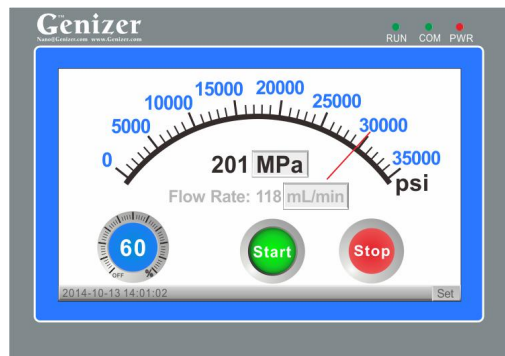
Phone: +1(323) 825-1851  
 Fax :+1(323) 978-4693  
 Email: Nano@Genizer.com  
[http://www.genizer.com/pilotpump\\_p0026.html](http://www.genizer.com/pilotpump_p0026.html)

Discount available for public research. Genizer.com reserves the right to change specifications without notice. © 2009 by Genizer. All rights reserved. English Version 091620.

# PilotPump Sanitary High Pressure Pump



PilotPump

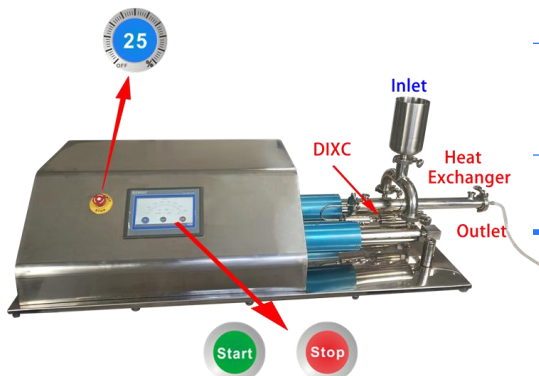


Foolproof Control

### 3 Steps for running the PilotPump

**Step 2:** Adjust the Speed from Low to High

**Step 1:** Sample from Inlet



**Step 3:** Press the Start or Stop

## Standard Features

Parts	1 set of Diamond interaction chamber
Control System	High pressure programming control systems <sup>®</sup> : Touch Screen, Speed control, Auto stop control by volume, time, pressure or temperature, settable volume control as low as 10mL, display of flow rate and time, overload protection
Pressure Gauge	Electric
Inlet type	1" or 2" Tri-Clamp
Outlet type	1" or 2" Tri-Clamp
Inlet Reservoir	1L Stainless Cylinder or Online
Outlet Reservoir	1L Stainless Cylinder or Online
Product material	316L stainless steel, Tungsten Carbide, Viton, Teflon, UHMWPE
Material standard	Pharmaceutical Grade, FDA & GMP approvable
Warranty	1 year against any manufacturing defects

## Available Option

Parts	Liposome Extruders, Homogenizing valves - Two stages, Heat Exchanger
Cooling System	Sanitary Heat Exchanger (HPE350 or HPE450)
Detector	Pressure gauge, Pressure and Temp. transducer
Inlet/Outlet type	Luer or 1" or 2" Triclamp or 3/8" High pressure coupling
Inlet/Outlet Reservoir	1L, 2L stainless steel open reservoir; 2L, 5L pressurized stainless steel reservoir; Online or Tank
Cylinder	Titanium High pressure Cylinder (Resistant to strong acid and base)